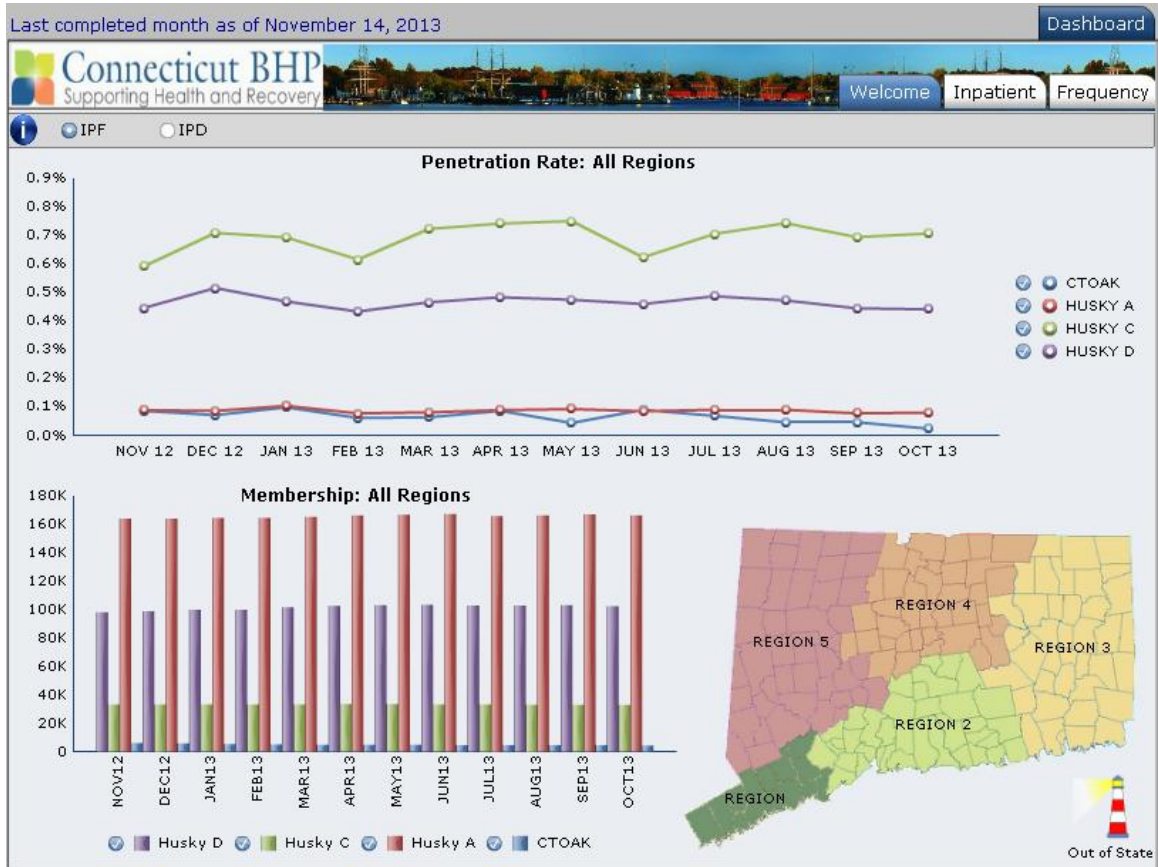


IP Adult Dashboard





Hartford Hospital

☒ Statewide ☐ Provider ☐ Eligibility

Report Type

Average Length of Stay

7 Day Readmission Rate

30 Day Readmission Rate

Service Class

☒ IPF ☐ IPD☒ IPF to IPF/IPD☐ IPD to IPF/IPD

2013

ALL

2012

QTR1

2011

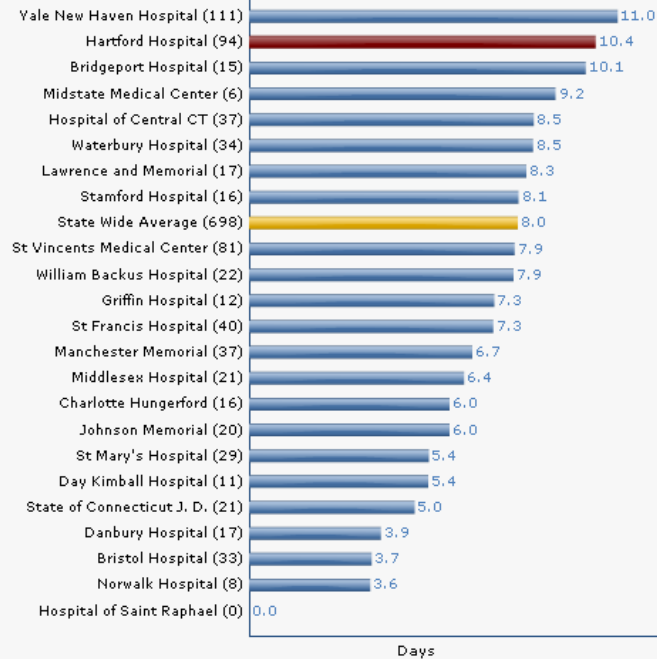
QTR2

QTR3

QTR4

☒ 18+ ☐ 18-54 ☐ 55+[ALOS Details](#)

Average Length of Stay



Days

Last completed month as of November 14, 2013

Dashboard



Welcome Inpatient Frequency



Hartford Hospital

☐ Statewide ☒ Provider ☐ Eligibility

Report Type

Average Length of Stay

7 Day Readmission Rate

30 Day Readmission Rate

Service Class

☒ IPF ☐ IPD

☐ IPF to IPF/IPD

☐ IPD to IPF/IPD

2013

ALL

2012

QTR1

2011

QTR2

QTR3

QTR4

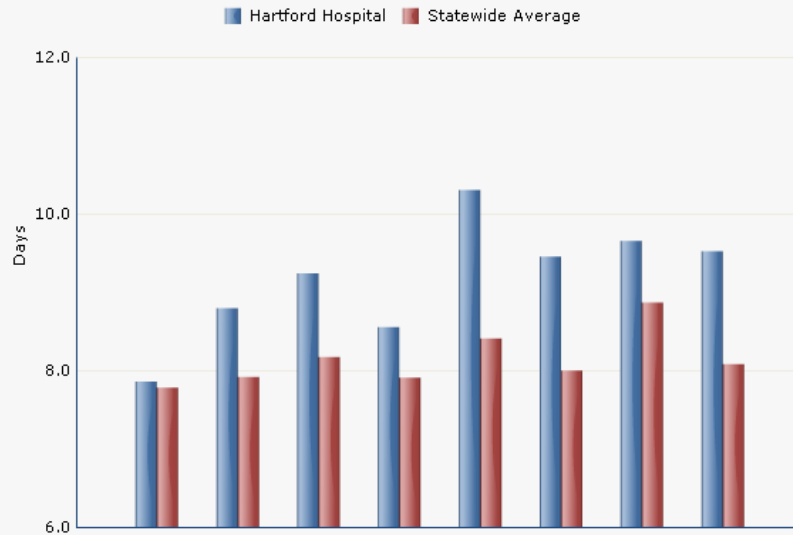
☒ 18+

☐ 18-54

☐ 55+

[ALOS Details](#)

Average Length of Stay



Description	11'Q3	11'Q4	12'Q1	12'Q2	12'Q3	12'Q4	13'Q1	13'Q2
Discharges	322	282	320	315	295	270	292	270
Length of Stay	2530	2481	2957	2695	3040	2553	2820	2571
Average LOS	7.9	8.8	9.2	8.6	10.3	9.5	9.7	9.5



Hartford Hospital

☐ Statewide

☐ Provider

☒ Eligibility

Report Type

Average Length of Stay

7 Day Readmission Rate

30 Day Readmission Rate

Service Class

☒ IPF ☐ IPD

☒ IPF to IPF/IPD

☐ IPD to IPF/IPD

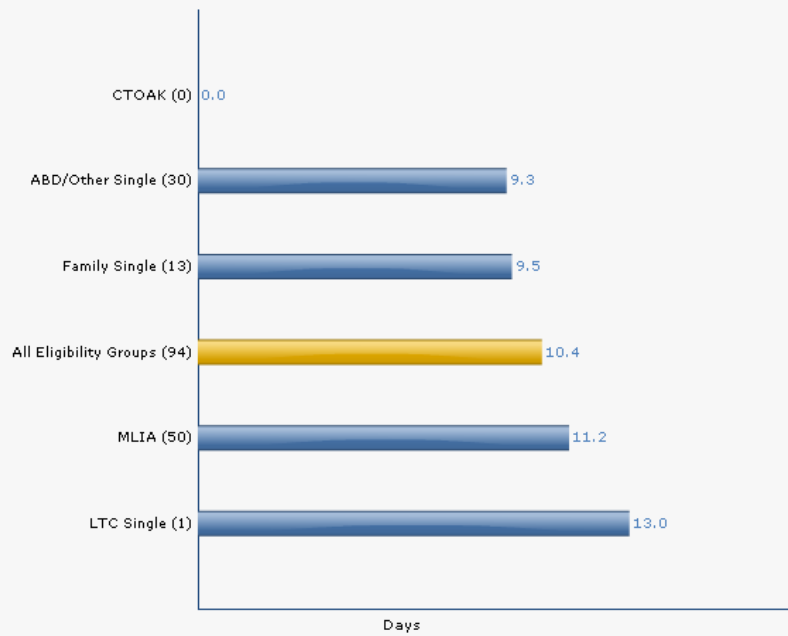
2013	ALL
2012	QTR1
2011	QTR2
	QTR3
	QTR4

☒ 18+ ☐ 18-54 ☐ 55+

[ALOS Details](#)

Hartford Hospital

Average Length of Stay by Eligibility



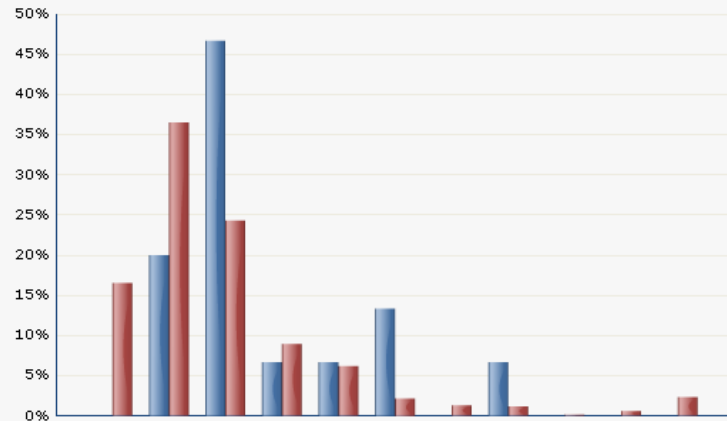




Bridgeport Hospital

Adult Inpatient Psychiatric Hospital days of Hospitalization

All Medicaid (excluding HUSKY B and Duals) and Charter Oak Population; Adults (18+)

 Bridgeport Hospital
  Statewide Average


PROVIDER	1-3 days	4-6 days	7-9 days	10-12 days	13-15 days	16-18 days	19-21 days	22-24 days	25-27 days	28-30 days	31+ days
Bridgeport Hospital (15)	0	3	7	1	1	2	0	1	0	0	0
	0.0%	20.0%	46.7%	6.7%	6.7%	13.3%	0.0%	6.7%	0.0%	0.0%	0.0%
Statewide (696)	115	254	169	62	43	15	9	8	1	4	16
	16.5%	36.5%	24.3%	8.9%	6.2%	2.2%	1.3%	1.1%	0.1%	0.6%	2.3%

PROVIDER

 Bridgeport Hospital
 Bristol Hospital
 Charlotte Hungerford
 Danbury Hospital
 Day Kimball Hospital
 Griffin Hospital
 Hartford Hospital
 Hospital of Central CT
 Hospital of Saint Raphael
 Johnson Memorial
 Lawrence and Memorial
 Manchester Memorial

2013

2012

2011

ALL

QTR1

QTR2

QTR3

QTR4

☒ Days

☐ Quarterly

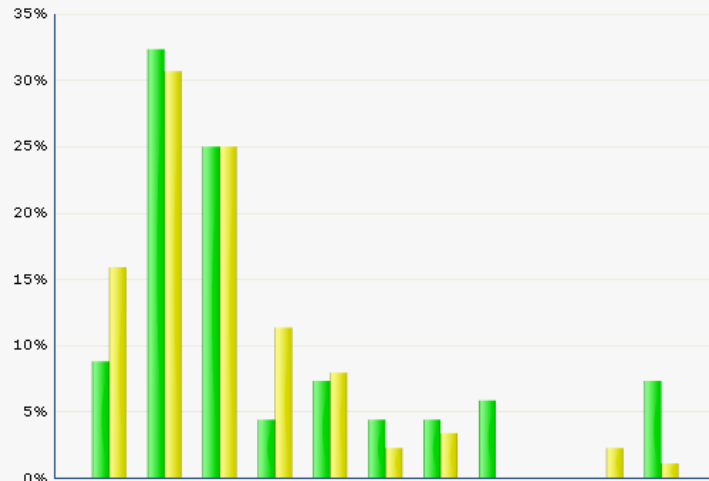


Bridgeport Hospital

Adult Inpatient Psychiatric Hospital days of Hospitalization

All Medicaid (excluding HUSKY B and Duals) and Charter Oak Population; Adults (18+)

■ 2013 Q1 ■ 2013 Q2



PROVIDER ▲

- Bridgeport Hospital
- Bristol Hospital
- Charlotte Hungerford
- Danbury Hospital
- Day Kimball Hospital
- Griffin Hospital
- Hartford Hospital
- Hospital of Central CT
- Hospital of Saint Raphael
- Johnson Memorial
- Lawrence and Memorial
- Manchester Memorial

Filters

2013 QTR1

2013 QTR2

☐ Days ☒ Quarterly

Quarter	1-3 days	4-6 days	7-9 days	10-12 days	13-15 days	16-18 days	19-21 days	22-24 days	25-27 days	28-30 days	31+ days
2013 Q1 (68)	6	22	17	3	5	3	3	4	0	0	5
2013 Q2 (88)	14	27	22	10	7	2	3	0	0	2	1